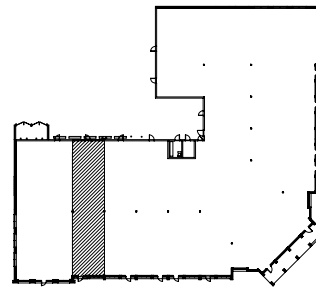
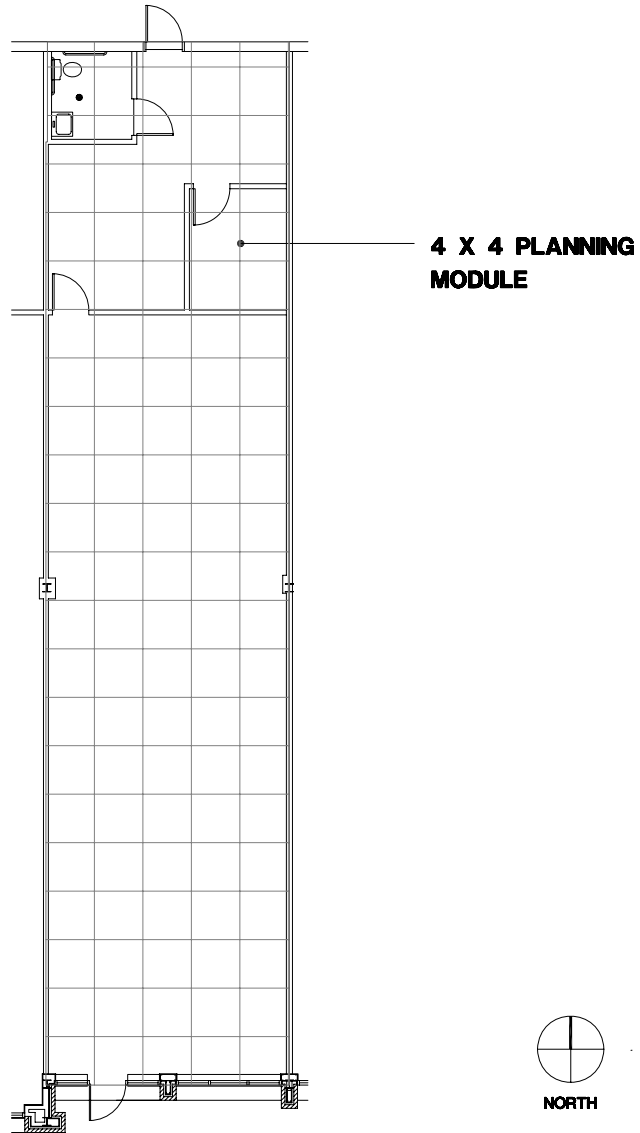


Troy, Michigan



SUITE LOCATION PLAN



Northfield Point Marketplace

5369 Crooks Road | Troy, Michigan 48098

SUITE 5369 | First Floor

- Outstanding visibility from Crooks Road
- Easy access to I-75
- Ample parking
- Only commercial zoning within 1.5 miles
- 1,728 R.S.F.

