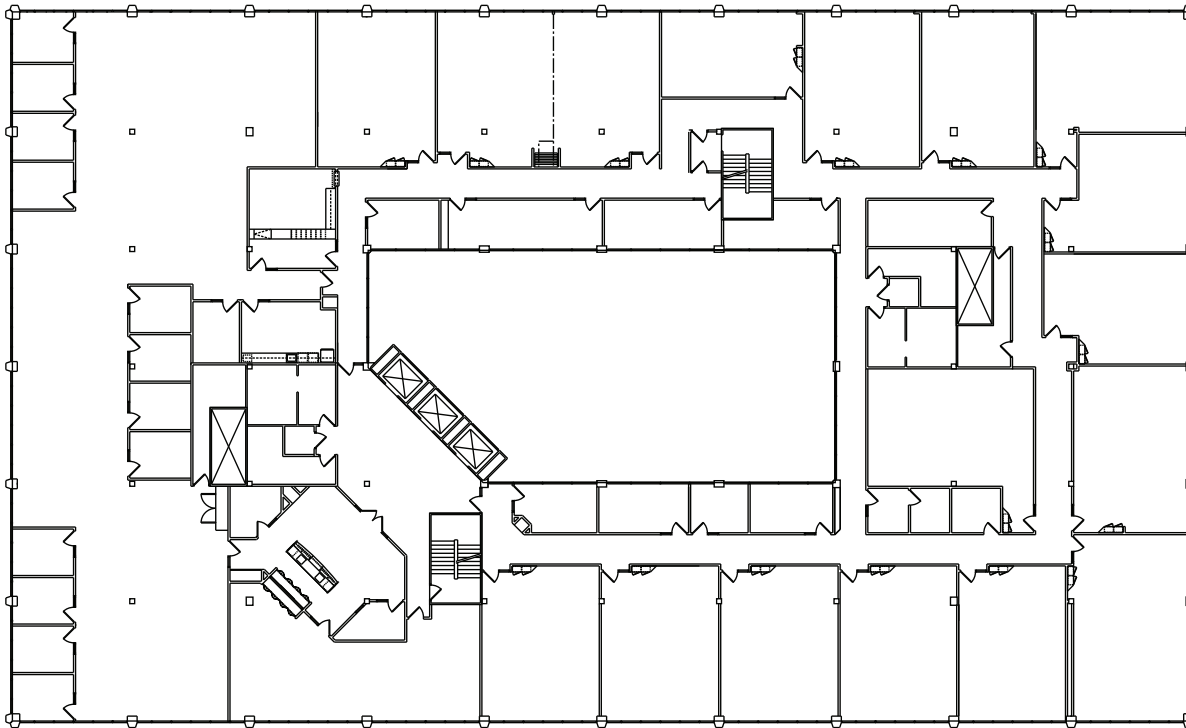


## Southfield, Michigan

SUITE NO. 500  
29,845 U.S.F.  
33,725 R.S.F.



NORTH



### Evergreen Atrium

26261 Evergreen Road | Southfield, Michigan 48076

### SUITE 500 | Fifth Floor

- Flexible floor layouts
- Market tenant improvements available
- Easy access to I-696 and Lodge (US 10) freeways
- Fully sprinklered building
- 29,845 U.S.F. / 33,725 R.S.F.
- Common area factor 13%



150 W. 2nd Street • Suite 200 • Royal Oak, MI 48067 • Telephone: 248-358-0800 • etkinllc.com

