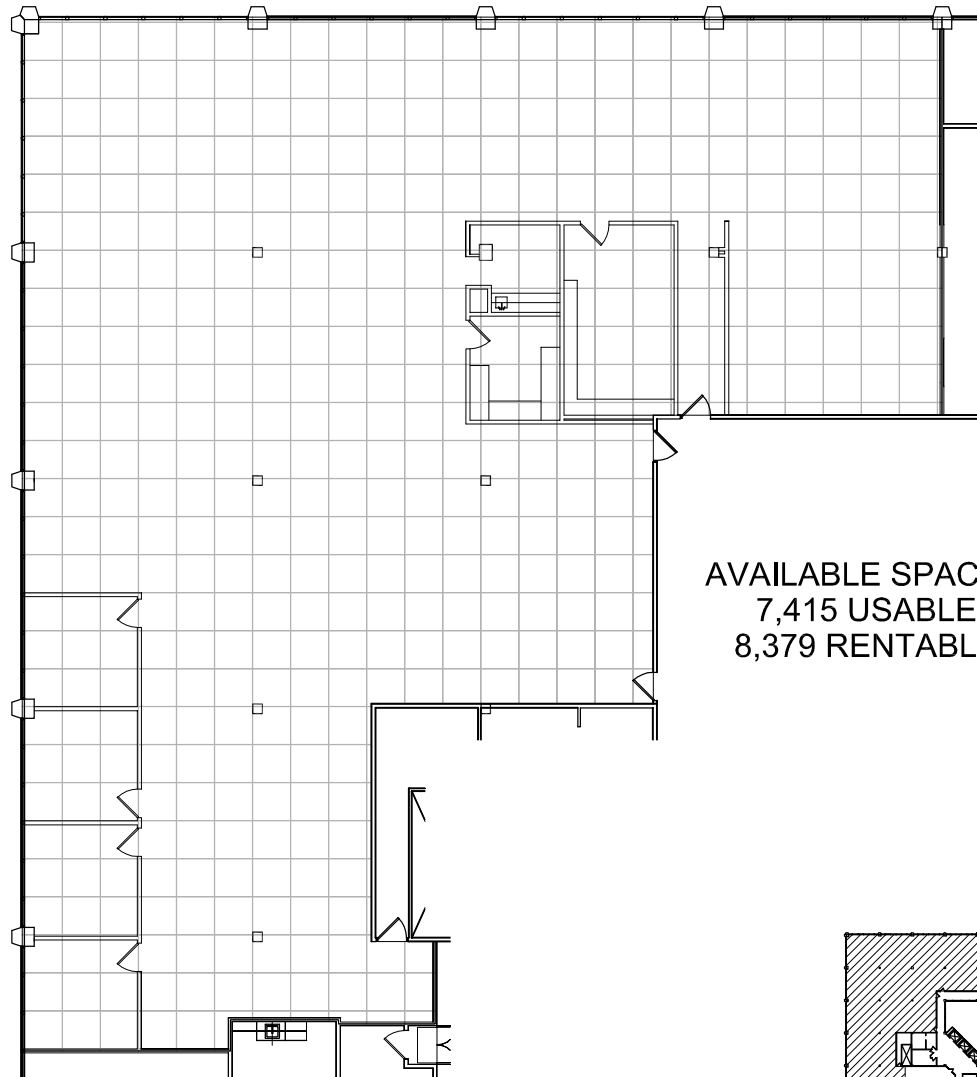
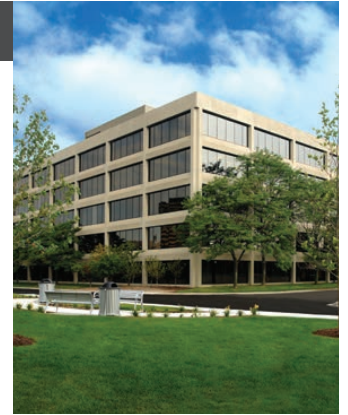
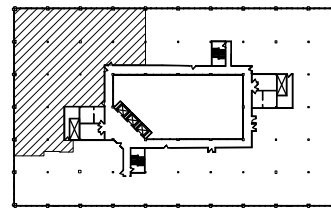


Southfield, Michigan



AVAILABLE SPACE PLAN
7,415 USABLE S.F.
8,379 RENTABLE S.F.



SUITE LOCATION PLAN

Evergreen Atrium

26261 Evergreen Rd. | Southfield, Michigan 48076

SUITE 440 | Fourth Floor

- Corner Suite with floor to ceiling windows along exterior perimeter
- Open Floor Plan
- Break room with sink
- Fully sprinklered building
- Easy access to I-696 and Lodge (US 10) freeways
- 7,415 U.S.F. / 8,379 R.S.F.
- Common area factor 13%

