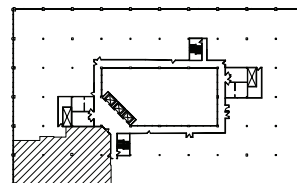
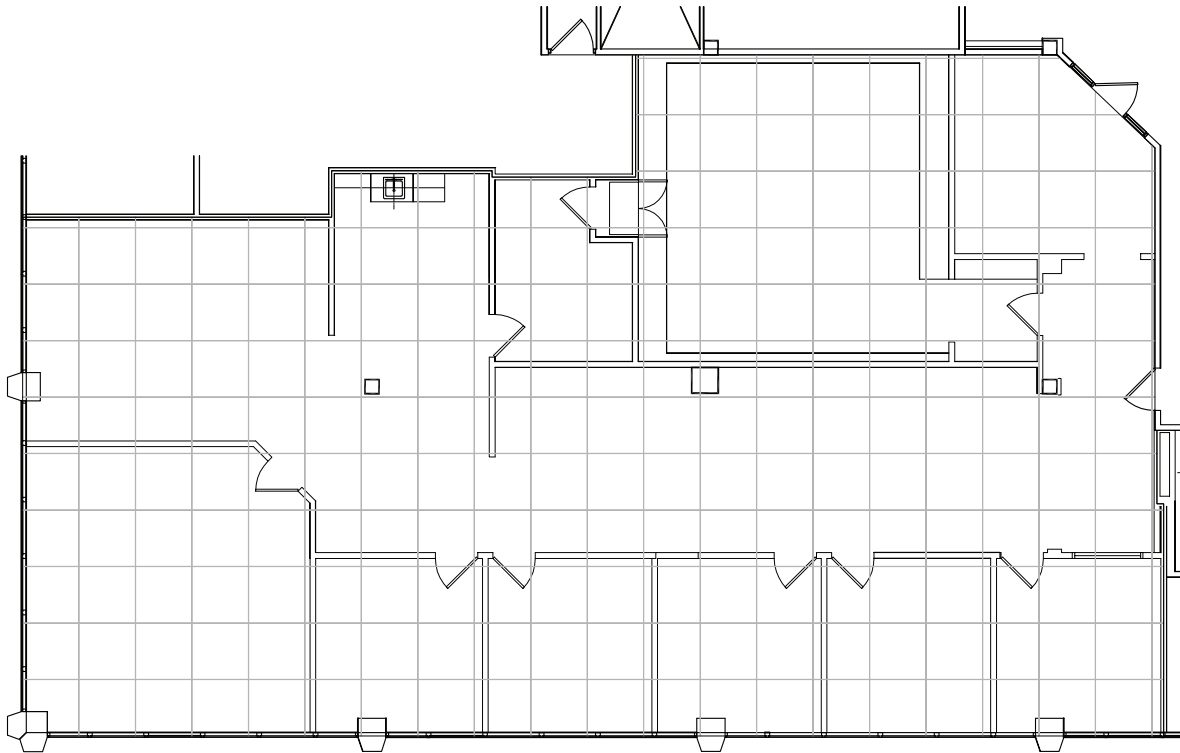


AVAILABLE SPACE PLAN
3,420 USABLE S.F.
3,865 RENTABLE S.F.



NORTH

SUITE LOCATION PLAN



Evergreen Atrium

26261 Evergreen Rd. | Southfield, Michigan 48076

SUITE 425 | Fourth Floor

- Multiple windowed offices
- Break room with sink
- Easy access to I-696 and Lodge (US 10) freeways
- Fully sprinklered building
- 3,420 U.S.F. / 3,865 R.S.F.
- Common area factor 13%

