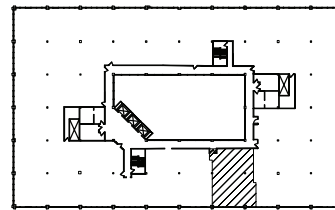
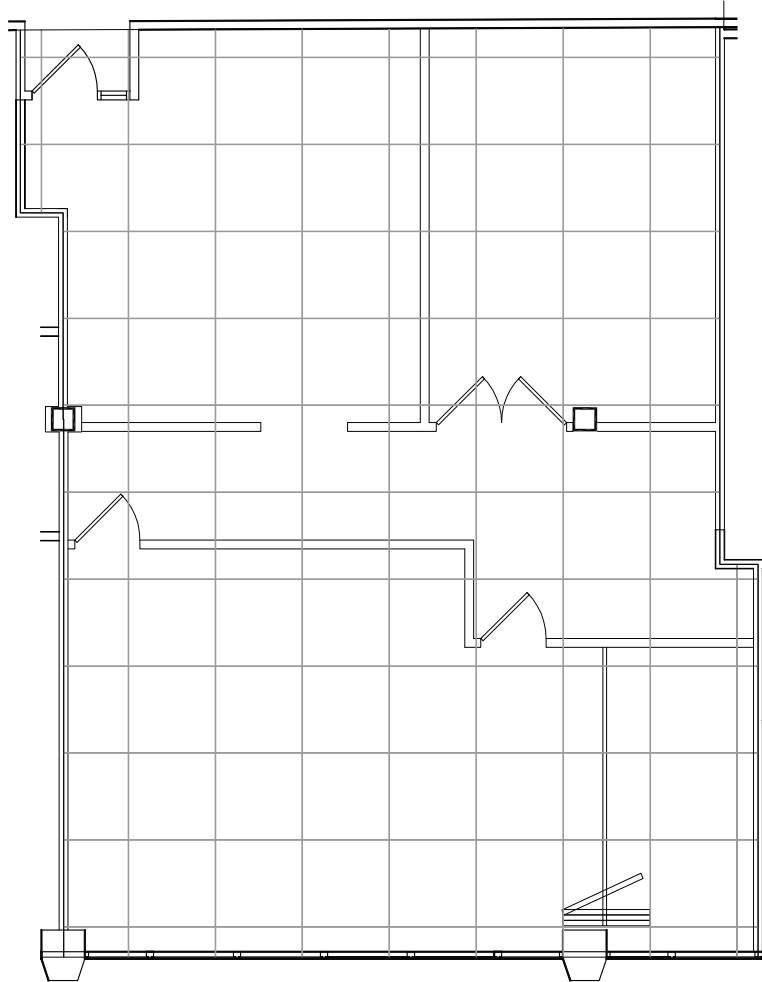


Southfield, Michigan

AVAILABLE SPACE PLAN
1,338 USUABLE S.F.
1,512 RENTABLE S.F.



SUITE LOCATION PLAN



Evergreen Atrium

26261 Evergreen Rd. | Southfield, Michigan 48076

SUITE 410 | Fourth Floor

- Beautiful 5-story atrium
- Easy access to I-696 and Lodge (US 10) freeways
- Fully sprinklered building
- 1,338 U.S.F. / 1,512 R.S.F.
- Common area factor 13%

