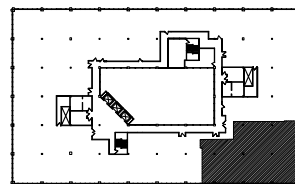
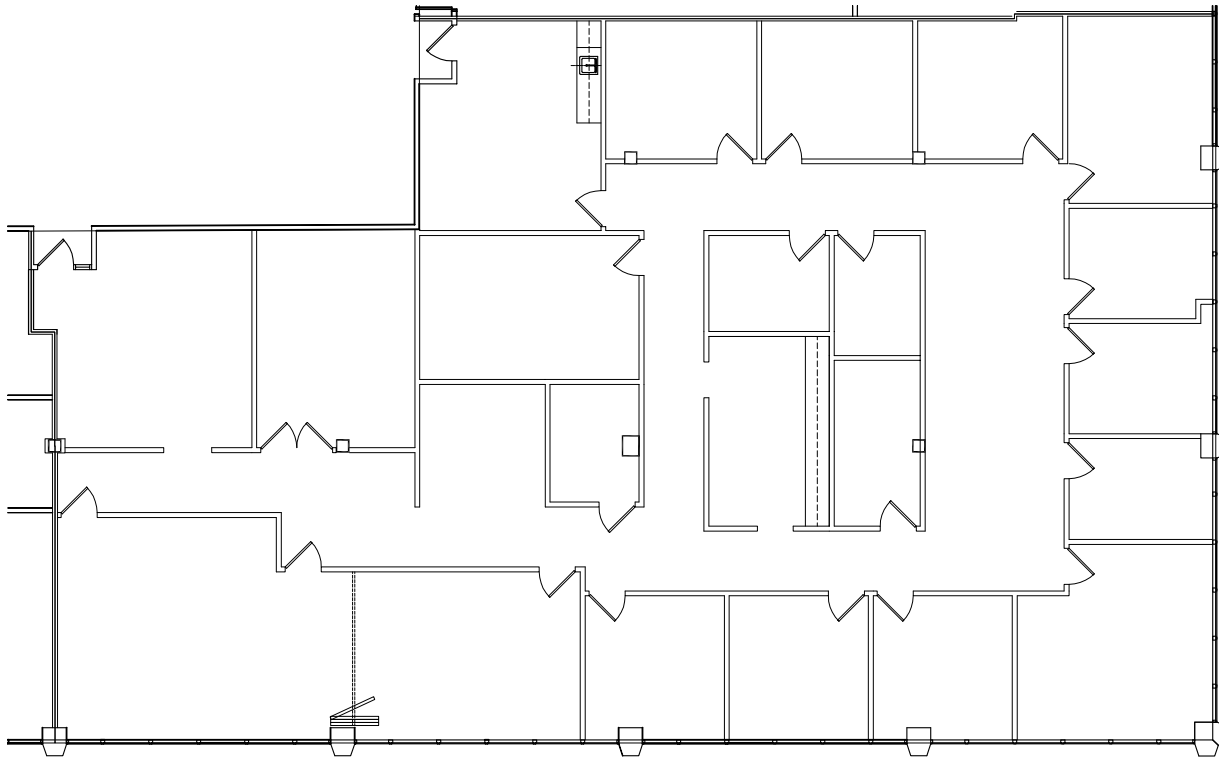


AVAILABLE SPACE PLAN
5,323 USABLE S.F.
6,015 RENTABLE S.F.



SUITE LOCATION PLAN



Evergreen Atrium

26261 Evergreen Rd. | Southfield, Michigan 48076

SUITE 400 | Fourth Floor

- Multiple windowed offices
- Easy access to I-696 and Lodge (US 10) freeways
- Fully sprinklered building
- 5,323 U.S.F. / 6,015 R.S.F.
- Common area factor 13%

