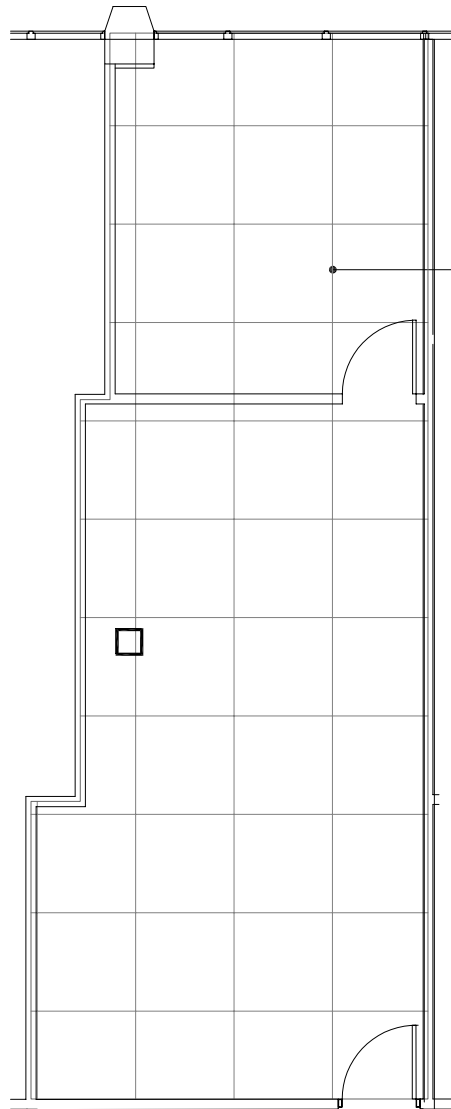
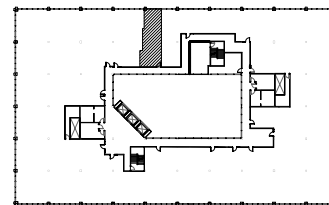


Southfield, Michigan



**4 X 4 PLANNING
MODULE**



SUITE LOCATION PLAN



NORTH

Evergreen Atrium

26261 Evergreen Rd. | Southfield, Michigan 48076

SUITE 275 | Second Floor

- High visibility
- Beautiful 5-story atrium
- Glass line on atrium
- Easy access to I-696 and Lodge (US 10) freeways
- Fully sprinklered building
- 619 U.S.F. / 700 R.S.F.
- Common area factor 13%

