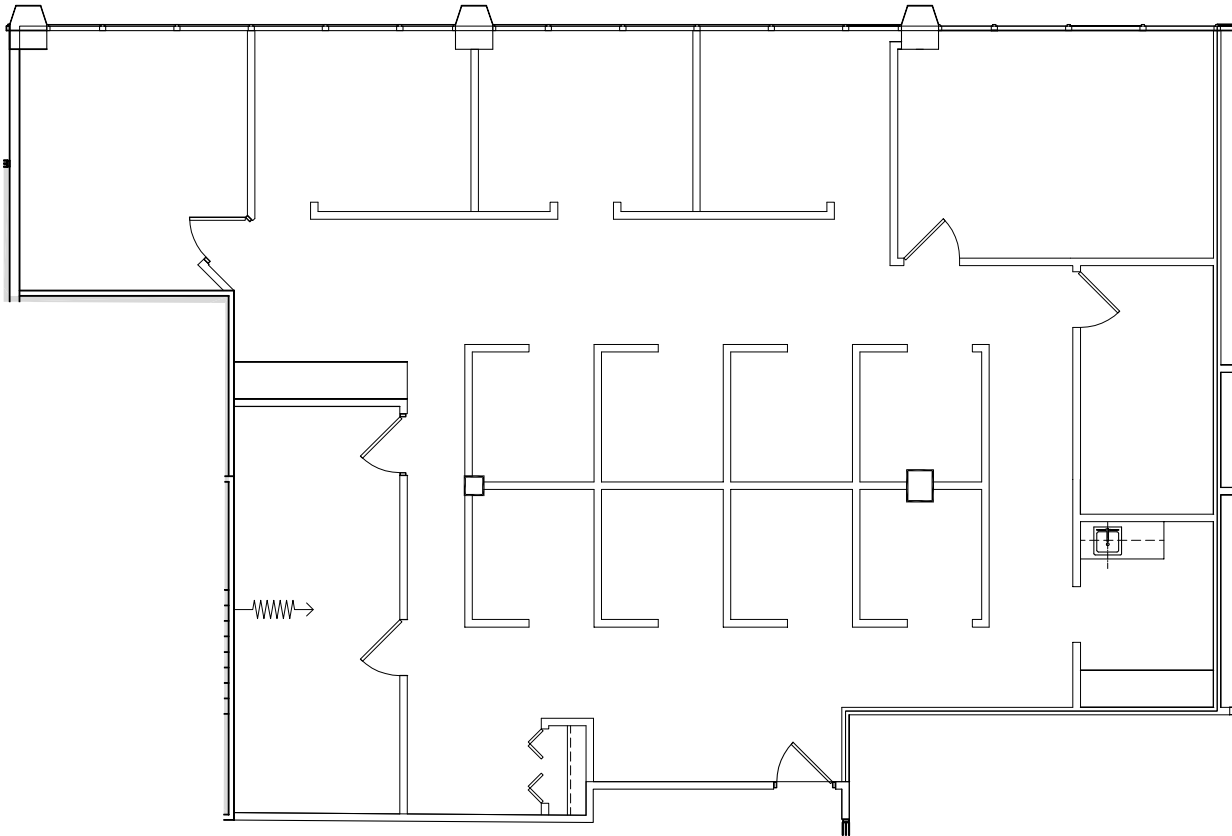


Southfield, Michigan

AVAILABLE SPACE PLAN
2,274 USABLE S.F.
2,570 RENTABLE S.F.



Evergreen Atrium

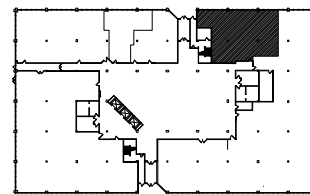
26261 Evergreen Rd. | Southfield, Michigan 48076

SUITE 115 | First Floor

- Windowed offices
- High visibility
- Beautiful 5-story atrium
- Glass line on atrium
- Easy access to I-696 and Lodge (US 10) freeways
- Fully sprinklered building
- 2,274 U.S.F. / 2,570 R.S.F.
- Common area factor 13%



NORTH



SUITE LOCATION PLAN



200 Franklin Center • 29100 Northwestern Hwy. • Southfield, MI 48034 • Telephone: 248-358-0800 • etkinllc.com

