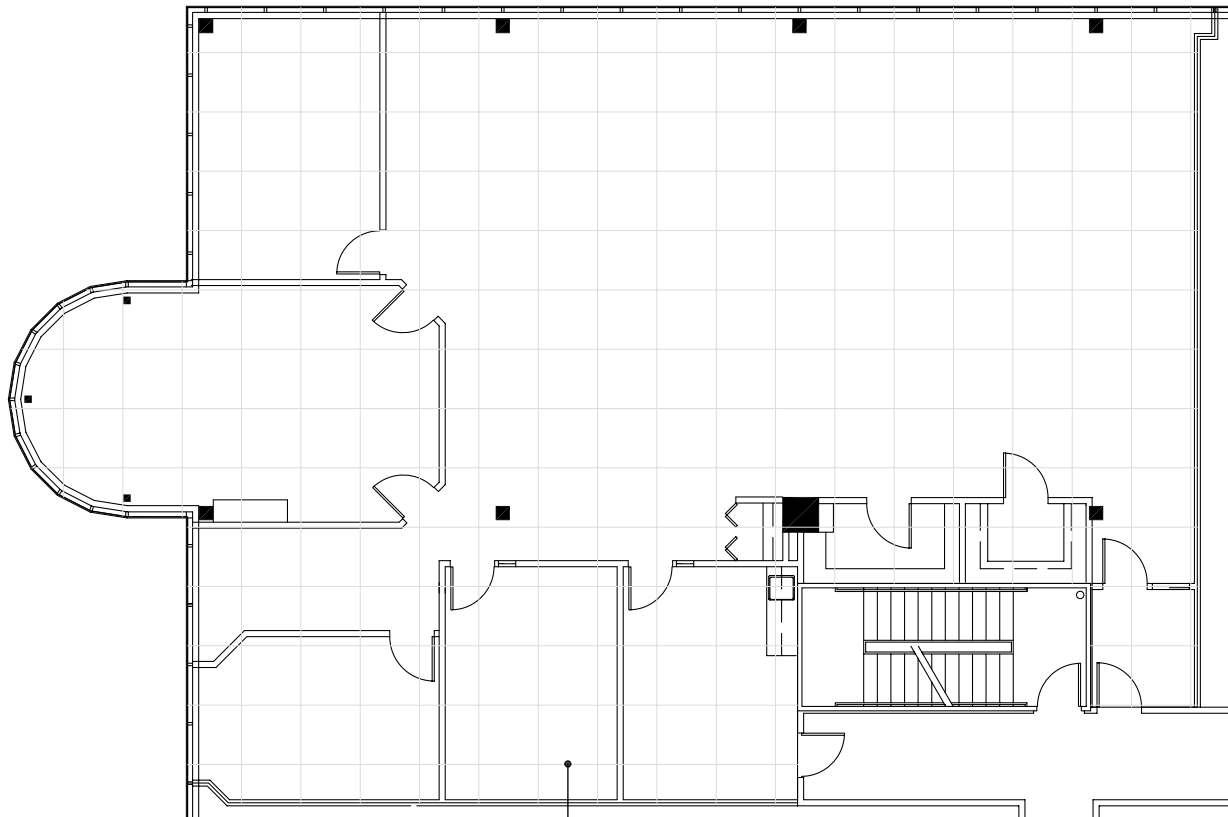
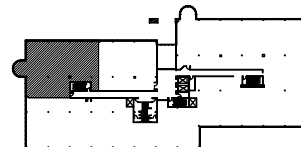


Southfield, Michigan



**4 X 4 PLANNING
MODULE**



SUITE LOCATION PLAN



City Center Office Park - South

26777 Central Park Blvd. | Southfield, Michigan 48076

SUITE 260S | Second Floor

- Multiple windowed offices possible
- Large open work area
- Break room with sink
- Direct access to I-696 and Lodge (US 10) freeways
- Covered parking
- Fully sprinklered building
- 3,473 U.S.F. / 3,925 R.S.F.
- Common area factor 13%

