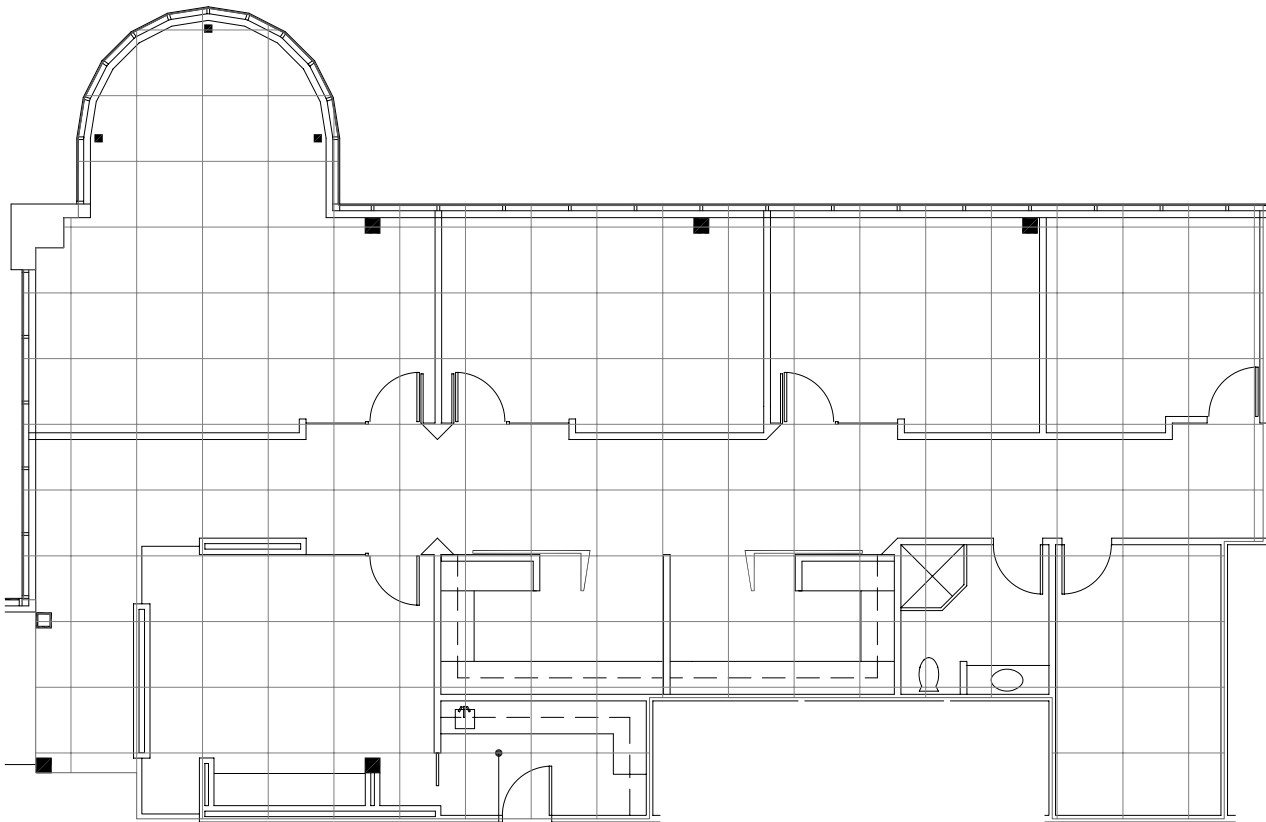
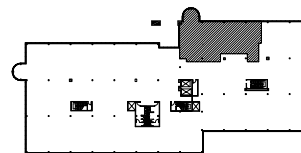


Southfield, Michigan



**4 X 4 PLANNING
MODULE**



SUITE LOCATION PLAN



NORTH

City Center Office Park - North

26999 Central Park Blvd. | Southfield, Michigan 48076

SUITE 375N | Third Floor

- 3 Windowed offices
- Large windowed conference or office
- Upgraded finishes
- Private bathroom
- Direct access to I-696 and Lodge (US 10) freeways
- Covered parking
- Fully sprinklered building
- 2,841 U.S.F. / 3,210 R.S.F.
- Common area factor 13%



200 Franklin Center • 29100 Northwestern Hwy. • Southfield, MI 48034 • Telephone: 248-358-0800 • etkinllc.com

