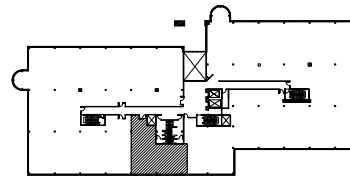
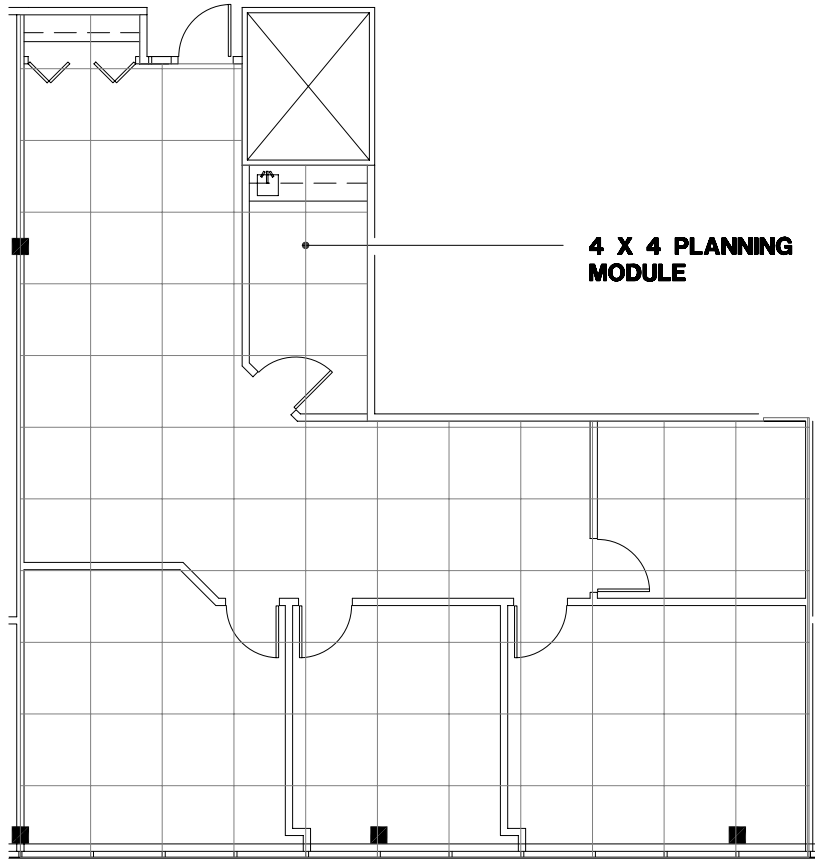


Southfield, Michigan



SUITE LOCATION PLAN



NORTH

City Center Office Park - North

26999 Central Park Blvd. | Southfield, Michigan 48076

SUITE 245N | Second Floor

- 3 Windowed offices
- Open work area
- Break room with cabinets
- Direct access to I-696 and Lodge (US 10) freeways
- Covered parking
- Fully sprinklered building
- 1,435 U.S.F. / 1,622 R.S.F.
- Common area factor 13%

