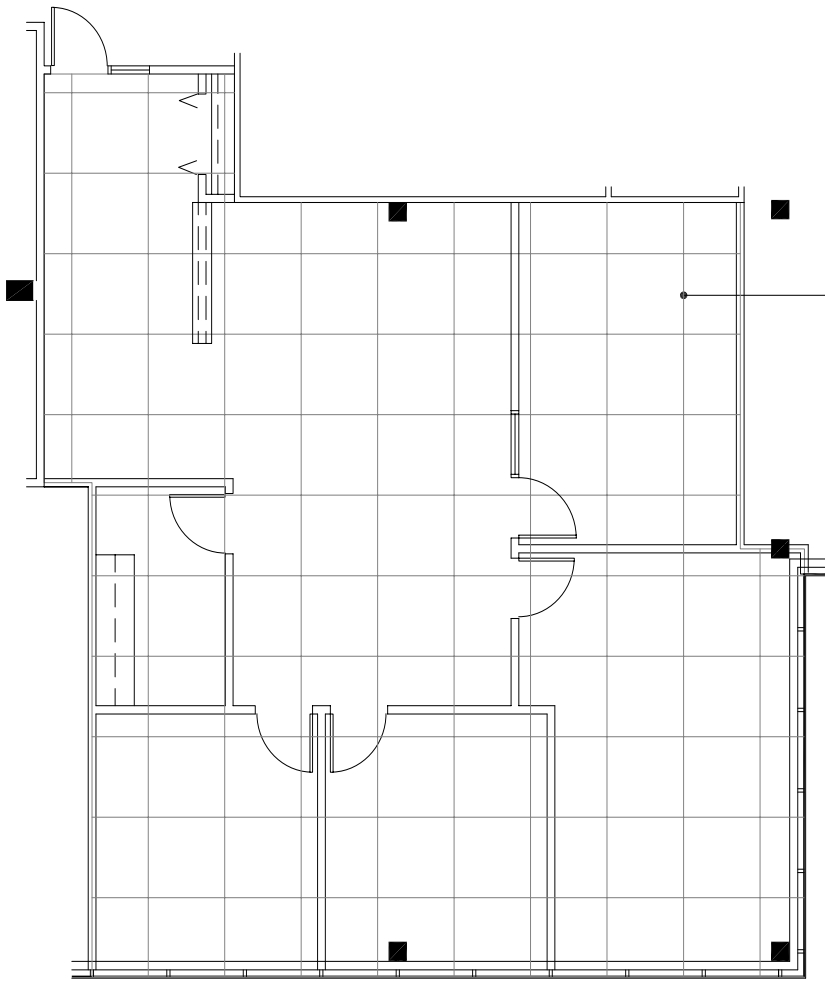
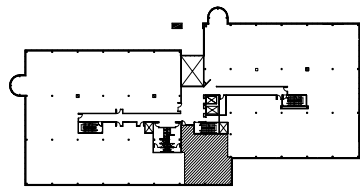


Southfield, Michigan



4 X 4 PLANNING
MODULE



SUITE LOCATION PLAN



City Center Office Park - North

26999 Central Park Blvd. | Southfield, Michigan 48076

SUITE 235N | Second Floor

- 3 Windowed offices
- Open work area
- Break room with cabinets
- Direct access to I-696 and Lodge (US 10) freeways
- Covered parking
- Fully sprinklered building
- 1,473 U.S.F. / 1,664 R.S.F.
- Common area factor 13%

