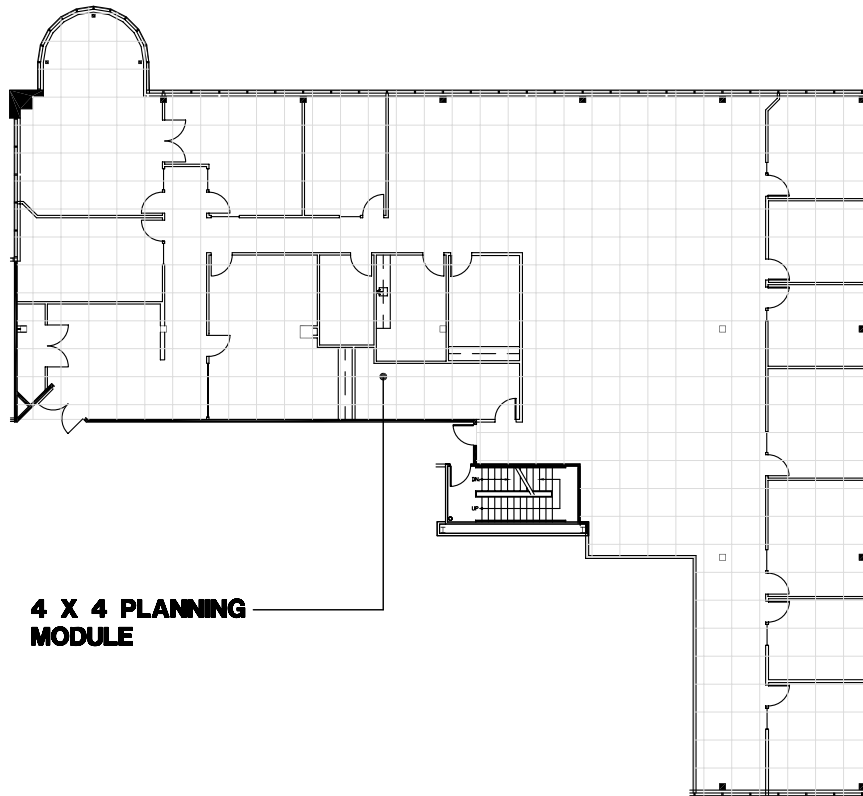
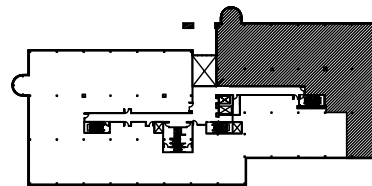


Southfield, Michigan



**4 X 4 PLANNING
MODULE**



SUITE LOCATION PLAN



NORTH

City Center Office Park - North

26999 Central Park Blvd. | Southfield, Michigan 48076

SUITE 200N | Second Floor

- 9 Windowed offices
- Large open work area
- Exterior glass on 3 sides
- Direct access to I-696 and Lodge (US 10) freeways
- Covered parking
- Fully sprinklered building
- 7,676 U.S.F. / 8,674 R.S.F.
- Common area factor 13%

