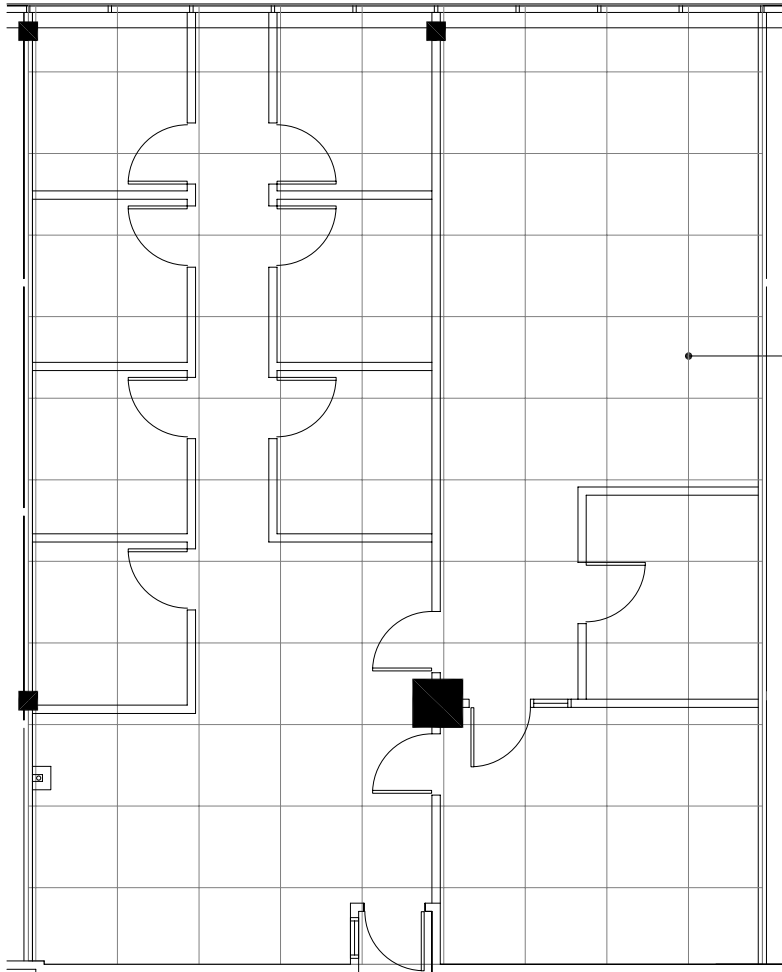
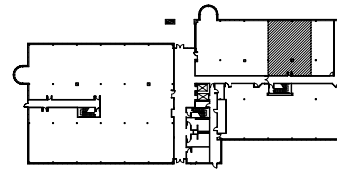


Southfield, Michigan



4 X 4 PLANNING  
MODULE



SUITE LOCATION PLAN



NORTH

### City Center Office Park - North

26999 Central Park Blvd. | Southfield, Michigan 48076

#### SUITE 170N | First Floor

- Multiple offices
- Large work area
- Direct access to I-696 and Lodge (US 10) freeways
- Covered parking
- Fully sprinklered building
- 1,692 U.S.F. / 1,912 R.S.F.
- Common area factor 13%

