

Southfield, Michigan



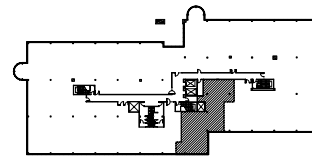
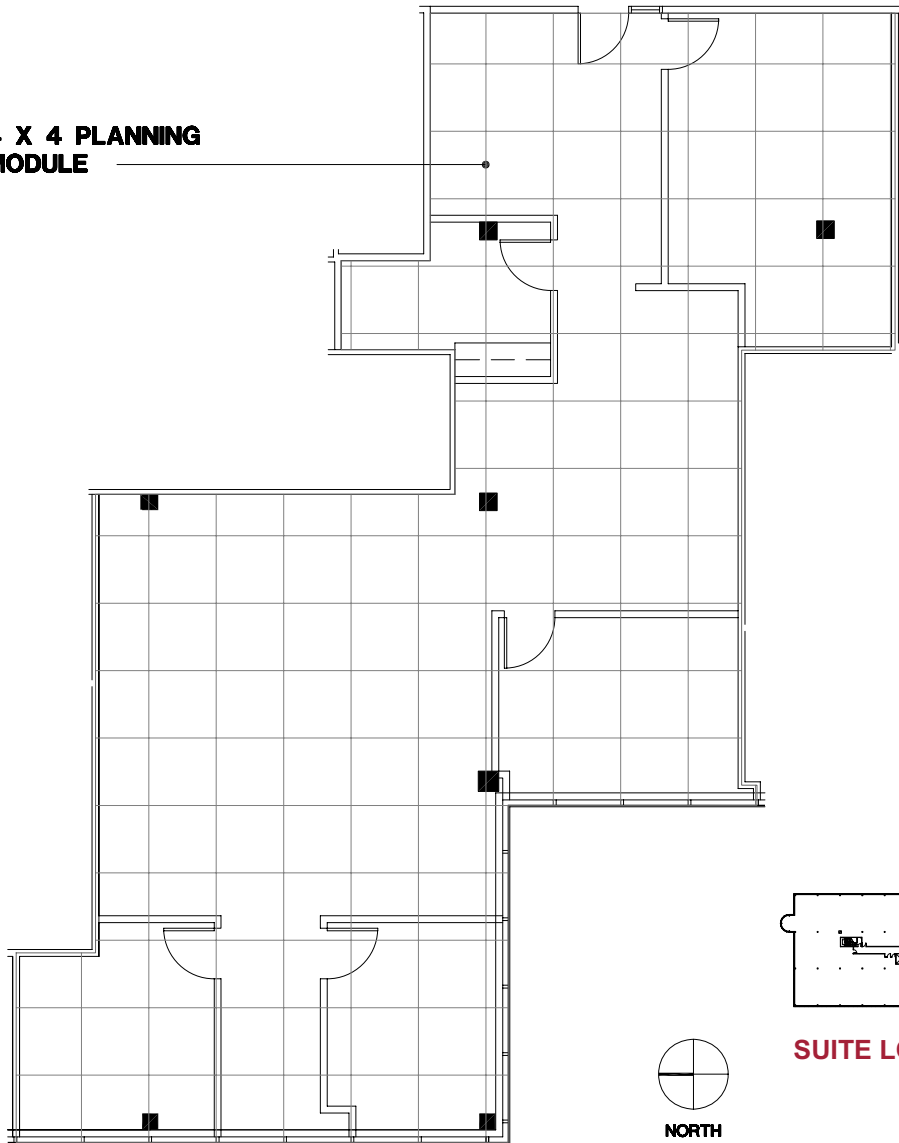
City Center Office Park - South

26777 Central Park Blvd. | Southfield, Michigan 48076

SUITE 375S | Third Floor

- 3 Windowed offices
- Open work area
- Direct access to I-696 and Lodge (US 10) freeways
- Covered parking
- Fully sprinklered building
- 1,976 U.S.F. / 2,233 R.S.F.
- Common area factor 13%

4 X 4 PLANNING
MODULE



SUITE LOCATION PLAN



NORTH

