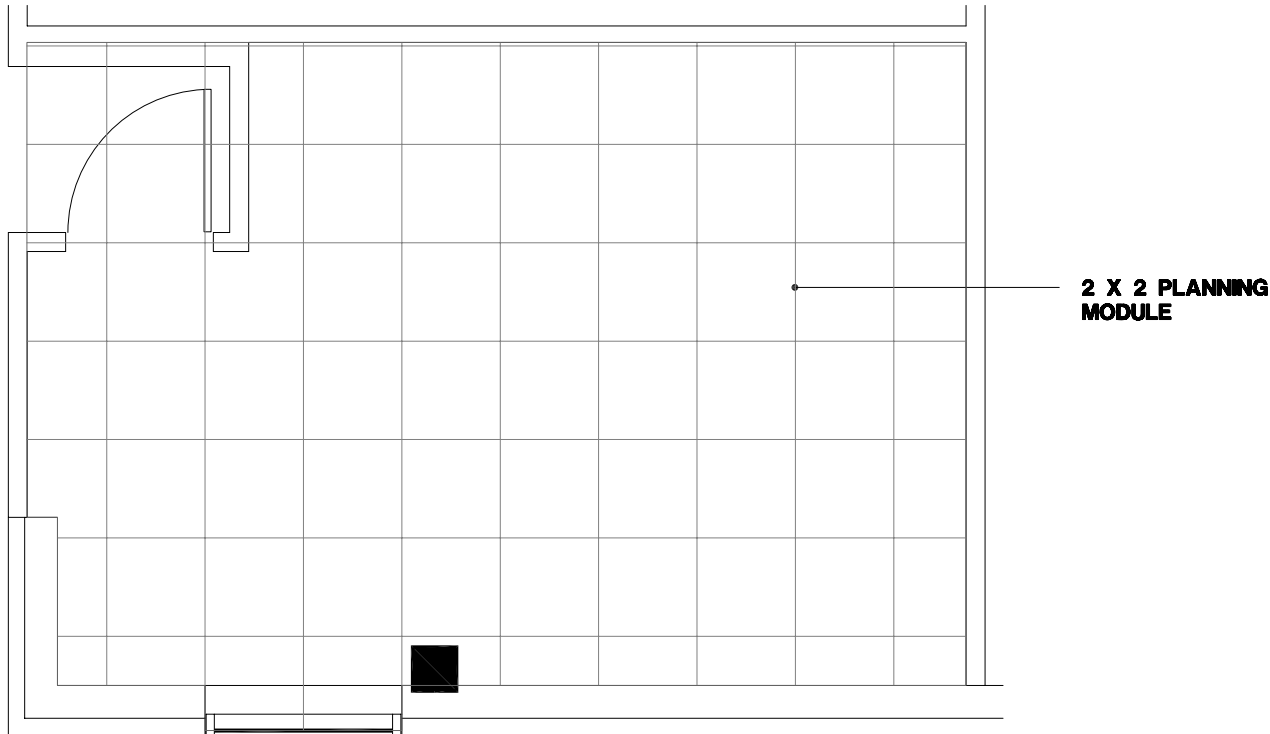
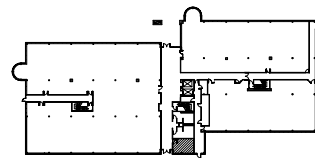


Southfield, Michigan



2 X 2 PLANNING
MODULE



SUITE LOCATION PLAN



NORTH

City Center Office Park - North

26999 Central Park Blvd. | Southfield, Michigan 48076

SUITE 145N | First Floor

- One windowed space
- Direct access to I-696 and Lodge (US 10) freeways
- Covered parking
- Fully sprinklered building
- 251 U.S.F / 284 R.S.F.
- Common area factor 13%

