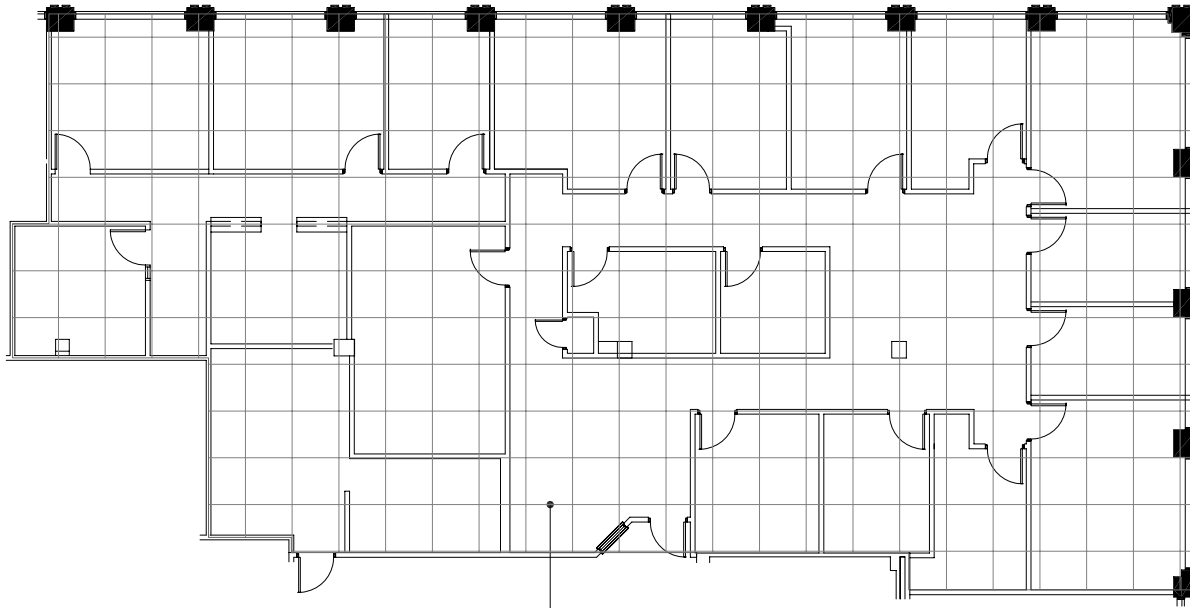
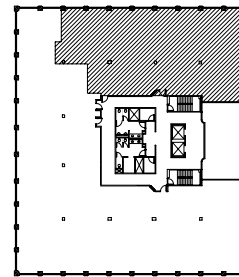


Troy, Michigan



**4 X 4 PLANNING
MODULE**



SUITE LOCATION PLAN



NORTH

1111 Long Lake

1111 W. Long Lake Rd. | Troy, Michigan 48098

SUITE 200 | Second Floor

- Multiple windowed offices
- Easy access to I-75 freeway
- Fully sprinklered building
- 4,379 U.S.F. / 4,948 R.S.F.
- Common area factor 13%

