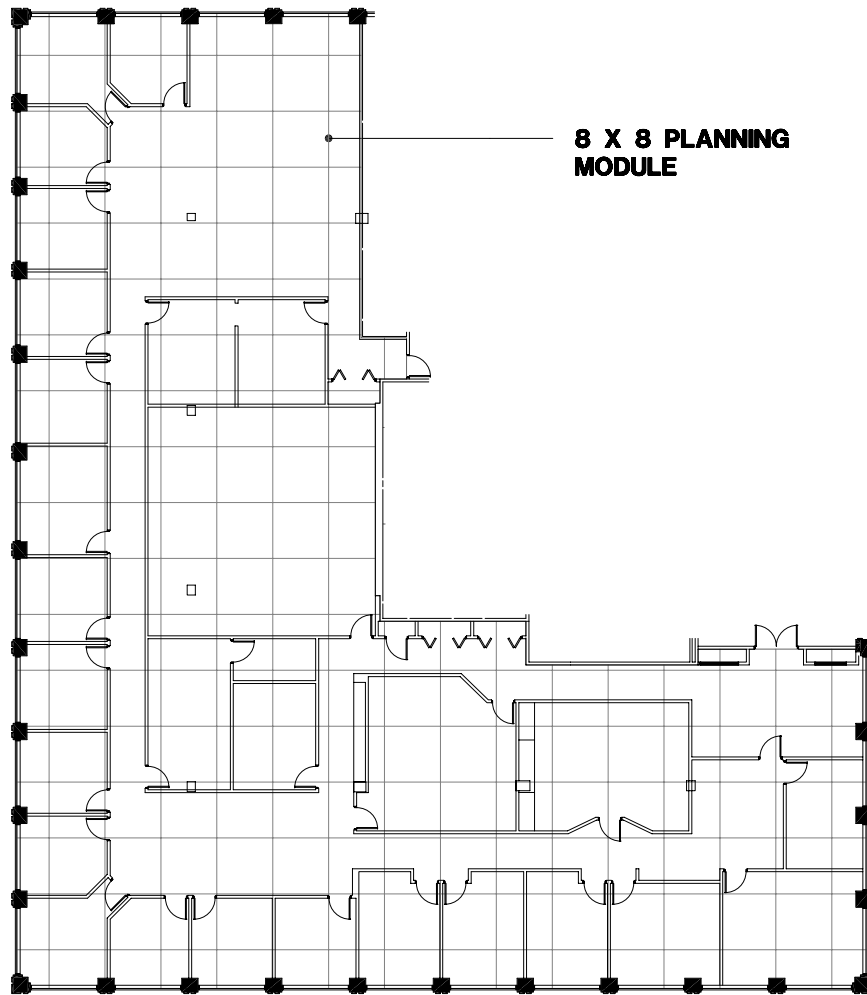
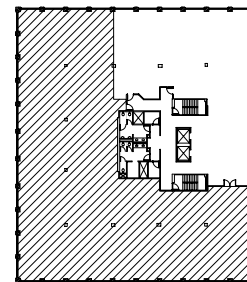


## Troy, Michigan



**8 X 8 PLANNING  
MODULE**



**SUITE LOCATION PLAN**



**NORTH**

## 1111 Long Lake

1111 W. Long Lake Rd. | Troy, Michigan 48098

### SUITE 102 | First Floor

- Multiple windowed offices
- Easy access to I-75 freeway
- Fully sprinklered building
- 10,524 U.S.F. / 11,892 R.S.F.
- Common area factor 13%



200 Franklin Center • 29100 Northwestern Hwy. • Southfield, MI 48034 • Telephone: 248-358-0800 • etkinllc.com

