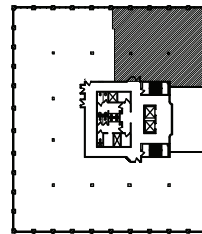
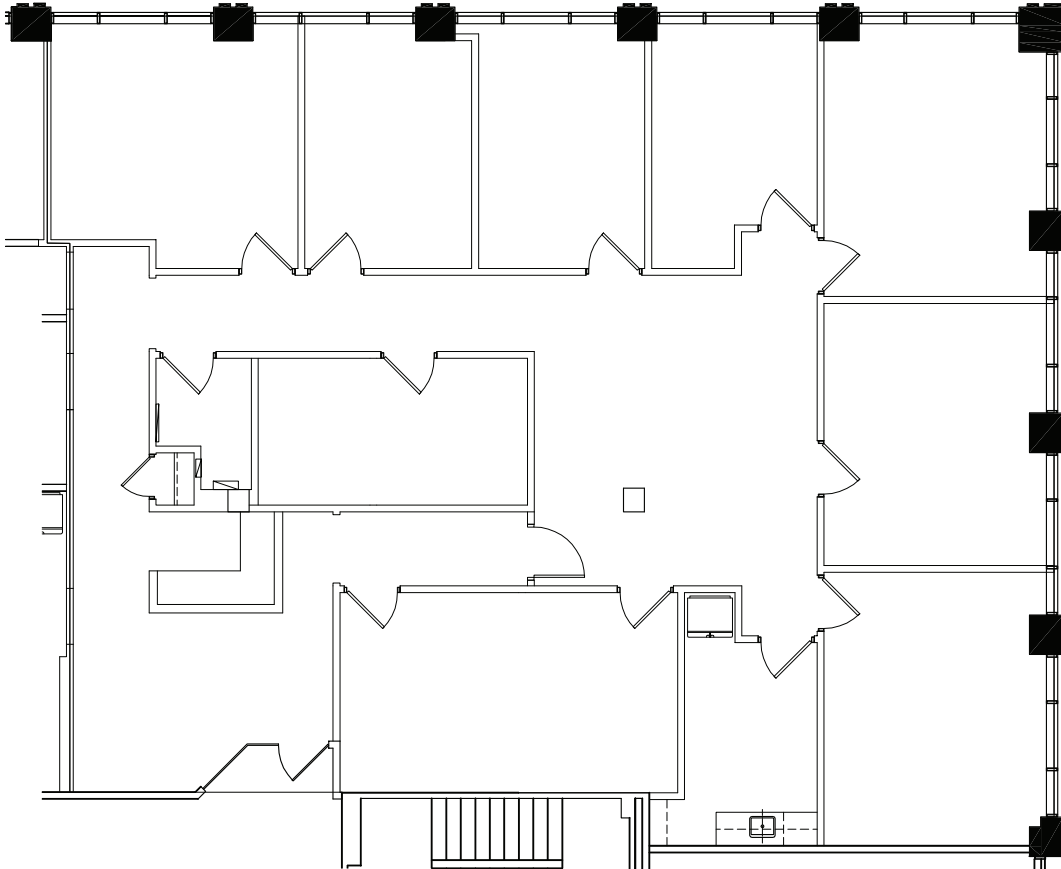


AVAILABLE SPACE PLAN
2,762 USABLE S.F.
3,121 RENTABLE S.F.



SUITE LOCATION PLAN

Troy, Michigan



1111 Long Lake

1111 W. Long Lake Rd. | Troy, Michigan 48098

SUITE 200 | Second Floor

- Breakroom with sink
- Covered parking
- Multiple windowed offices
- Easy access to I-75 freeway
- Fully sprinklered building
- 2,762 U.S.F. / 3,121 R.S.F.
- Common area factor 13%

